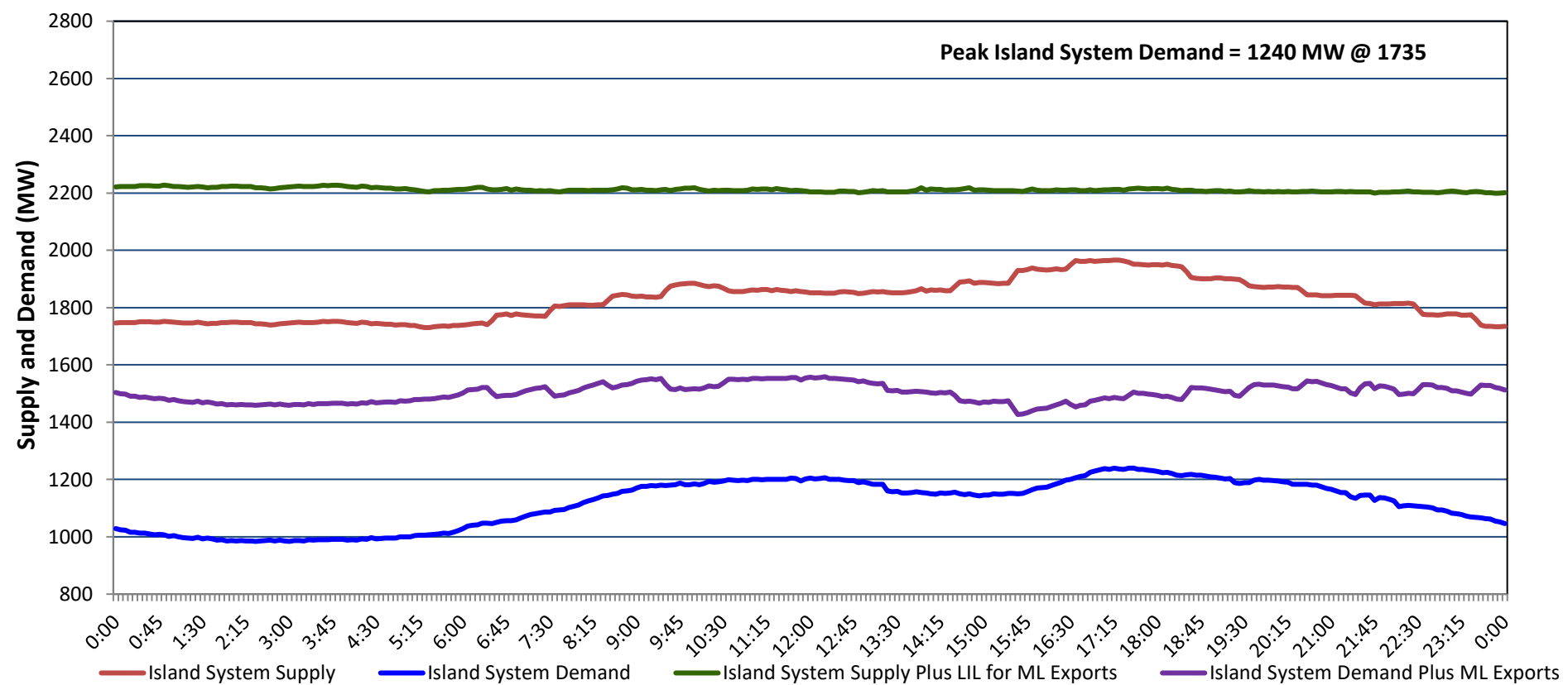


Newfoundland Labrador Hydro (NLH) Supply and Demand Status Report Filed Monday, January 13, 2025

Section 1 Island Interconnected System - Supply, Demand & Exports Actual 24 Hour System Performance For Saturday, January 11, 2025



Island Supply Notes For January 11, 2025

- A** As of 0000 hours, October 20, 2024, Holyrood Unit 1 unavailable due to forced extension to planned outage (170 MW).
B As of 1634 hours, January 07, 2025, Holyrood Unit 2 unavailable due to forced outage (170 MW).

Section 2 Island Interconnected System - Supply, Demand & Outlook

Sun, Jan 12, 2025	Island System Outlook ²	Seven-Day Forecast	Island System Daily Peak Demand (MW)	
			Forecast ⁸	Adjusted ⁶
Island System Supply: ⁴ NLH Island Generation: ^{3,7} NLH Island Power Purchases: ⁵ NP and CBPP Owned Generation: LIL/ML Net Imports to Island: ⁹	1,847 MW 1,355 MW 115 MW 210 MW 167 MW	Sunday, January 12, 2025	1,335	1,230
		Monday, January 13, 2025	1,355	1,249
		Tuesday, January 14, 2025	1,355	1,249
		Wednesday, January 15, 2025	1,335	1,230
		Thursday, January 16, 2025	1,340	1,235
		Friday, January 17, 2025	1,260	1,155
		Saturday, January 18, 2025	1,400	1,294
7-Day Island Peak Demand Forecast:	1,400 MW			

Island Supply Notes For January 12, 2025

- Notes:**
1. Generation outages for running and corrective maintenance are included. These are not unusual for power system operations. They generally do not impact customer supply. Hydro schedules outages to system equipment whenever possible to coincide with periods when customer demands are low and sufficient supply reserves are available. However, from time to time equipment outages are necessary and reserves may be impacted.
 2. As of 0800 Hours.
 3. Gross continuous unit output.
 4. Gross output from all Island sources (including Note 4).
 5. NLH Island Power Purchases include: ML Imports, Exploits Generation, Rattle Brook, Star Lake, Wind Generation and capacity assistance (when applicable).
 6. Adjusted for interruptible load and the impact of voltage reduction when applicable.
 7. Due to limitations inherent in the design of combustion turbines, the output of combustion turbines may be reduced in the event that ambient temperatures exceed the threshold required for full rated output. This threshold is dependent on the design of each turbine.
 8. Does not include ML Exports.
 9. LIL Import sunk in the Island System. Actual LIL flows will be restricted by various system conditions including, but not limited to, Island Load, ML Exports and Avalon Unit status.

Section 3 Island Peak Demand and Exports Information Previous Day Actual Peak and Current Day Forecast Peak

Sat, Jan 11, 2025	Island Peak Demand ¹⁰	17:35	1,240 MW
	Exports at Peak		265 MW
	LIL Net Imports to Island		3,892 MWh
Sun, Jan 12, 2025	Forecast Island Peak Demand		1,335 MW

- Notes:** 10. Island Demand is supplied by NLH generation and purchases, LIL Imports plus generation owned and operated by Newfoundland Power and Corner Brook Pulp & Paper (Deer Lake Power, DLP).